

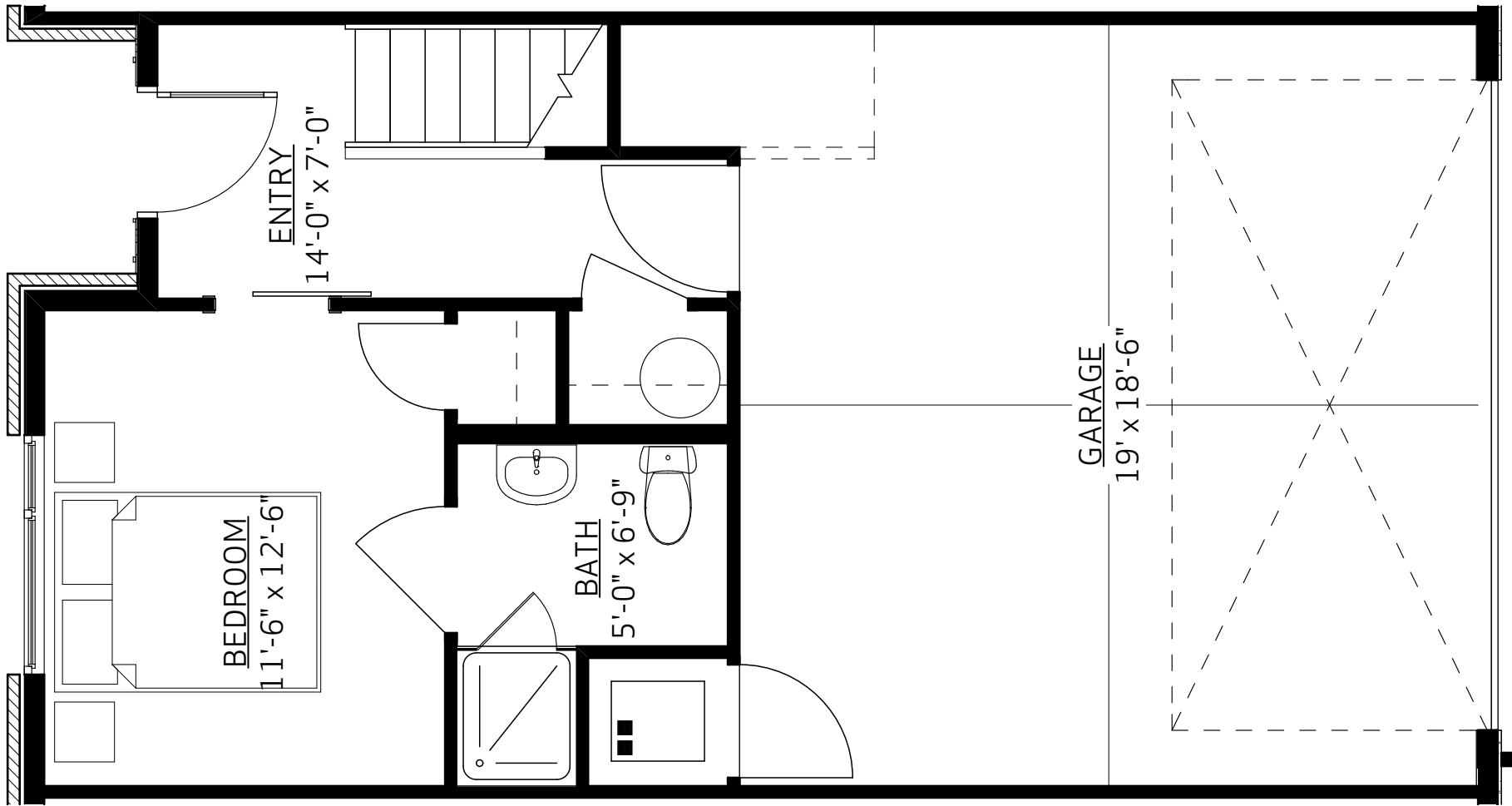
SKYLAND VILLAGE

SITE PLAN | BUILDING 3034

NORTH CITY PARK

Any and all details depicted are approximations and will change including, but not limited to dimensions, size, specifications, layout, and material. Developer reserves the right to make modifications to all items without notice. Please refer to real estate contract for change and communication procedures.

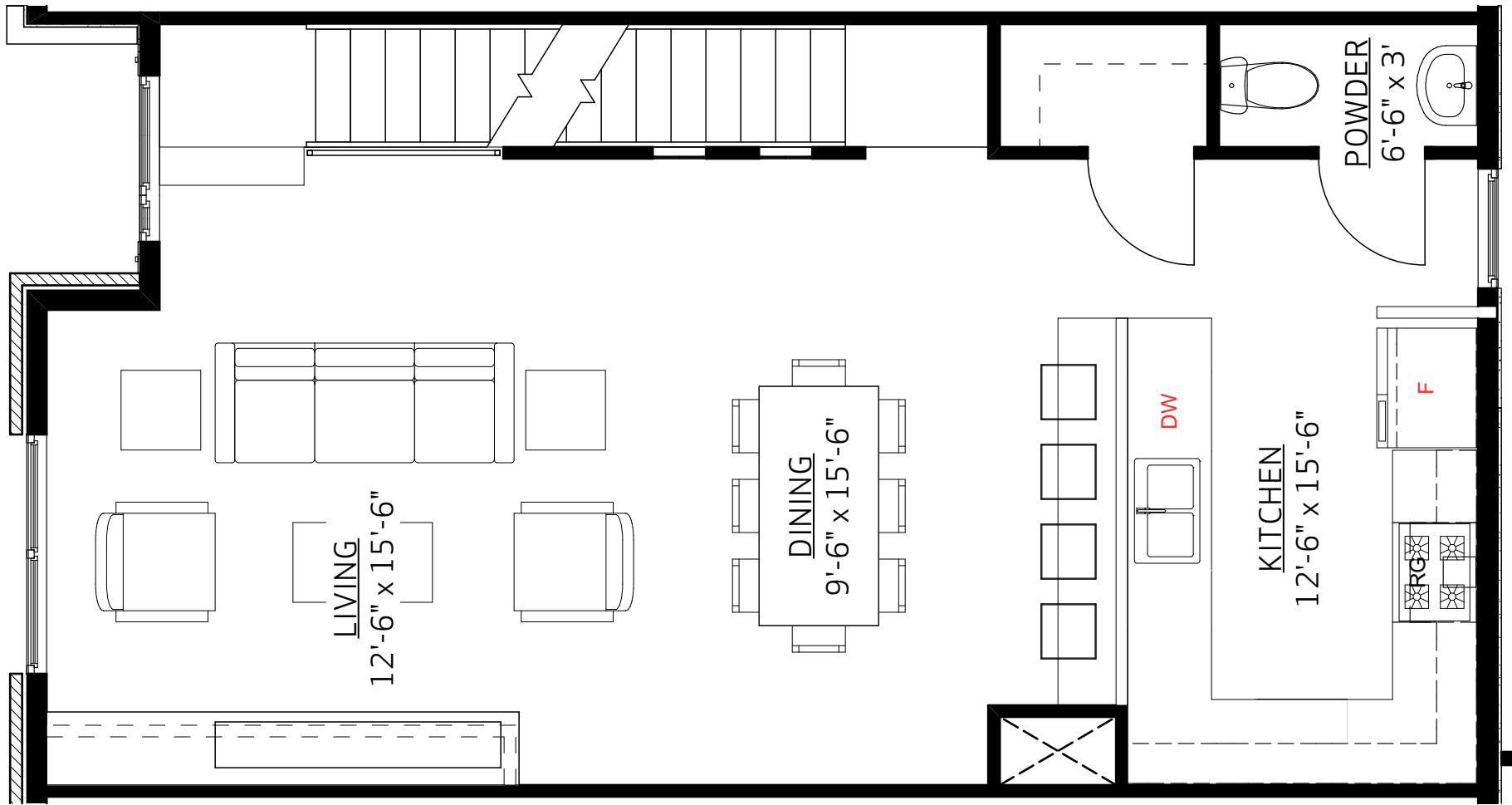




SKYLAND VILLAGE
UNIT TYPE 'A' - 1,835 SF | FIRST FLOOR PLAN
 NORTH CITY PARK

Any and all details depicted are approximations and will change including, but not limited to dimensions, size, specifications, layout, and material. Developer reserves the right to make modifications to all items without notice. Please refer to real estate contract for change and communication procedures.

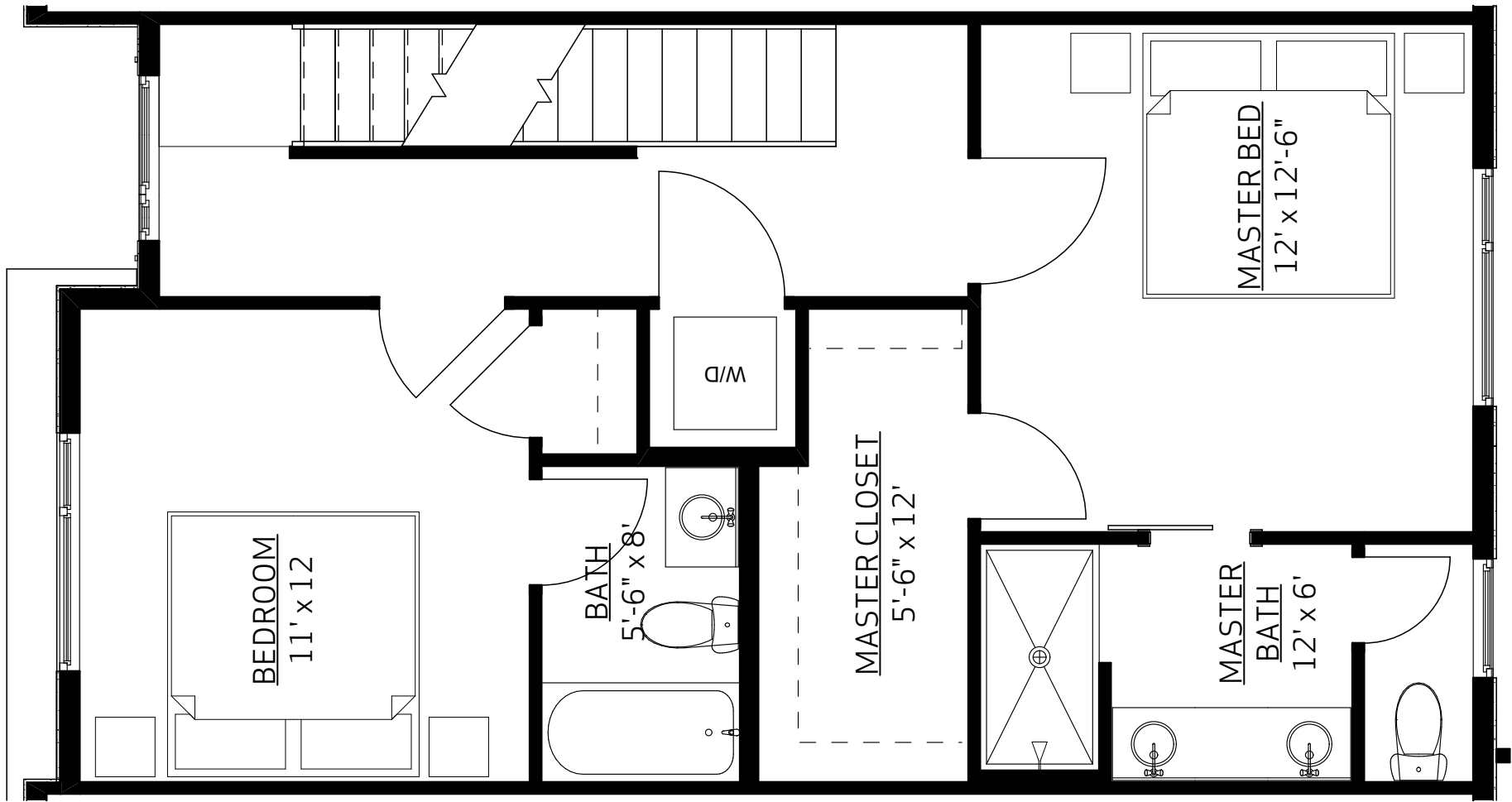




SKYLAND VILLAGE
UNIT TYPE 'A' - 1,835 SF | SECOND LEVEL FLOOR PLAN
 NORTH CITY PARK

Any and all details depicted are approximations and will change including, but not limited to dimensions, size, specifications, layout, and material. Developer reserves the right to make modifications to all items without notice. Please refer to real estate contract for change and communication procedures.

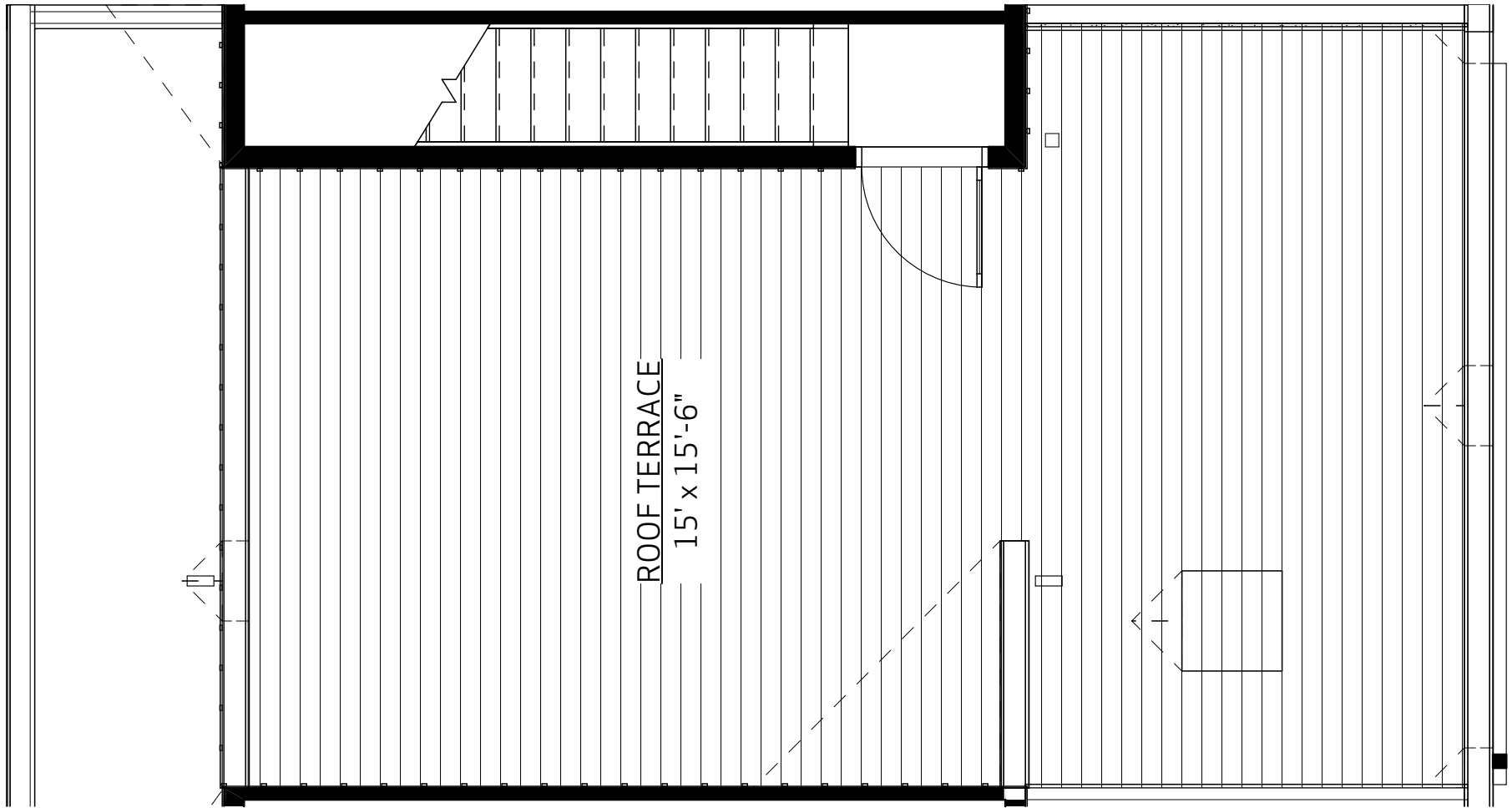




SKYLAND VILLAGE
UNIT TYPE 'A' - 1,835 SF | THIRD LEVEL FLOOR PLAN
 NORTH CITY PARK

Any and all details depicted are approximations and will change including, but not limited to dimensions, size, specifications, layout, and material. Developer reserves the right to make modifications to all items without notice. Please refer to real estate contract for change and communication procedures.





SKYLAND VILLAGE
UNIT TYPE 'A' - 1,835 SF | PENTHOUSE PLAN
NORTH CITY PARK

Any and all details depicted are approximations and will change including, but not limited to dimensions, size, specifications, layout, and material. Developer reserves the right to make modifications to all items without notice. Please refer to real estate contract for change and communication procedures.

